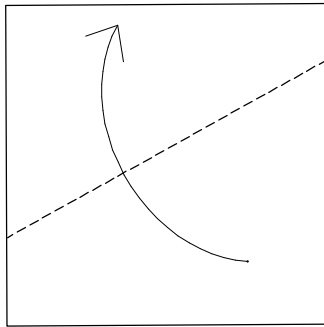


Sunrise

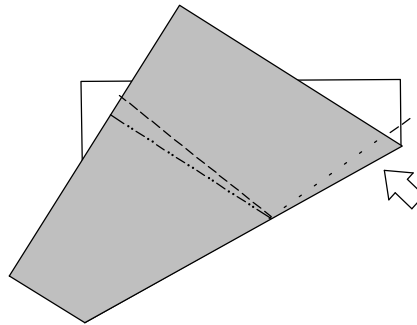
Designed on 10/24/98 and diagrammed in 10/20/99

© 1998 Sy Chen

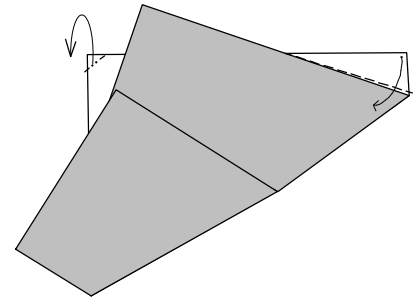
1. Start from duo-color square with sun color up; There is no reference point. Make it somewhat look like next step.



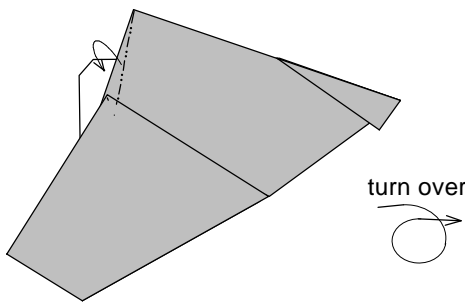
2. Swivel by changing folded edge slightly



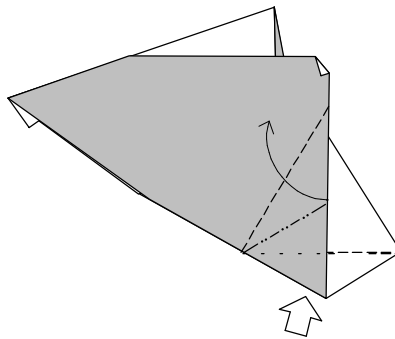
3.



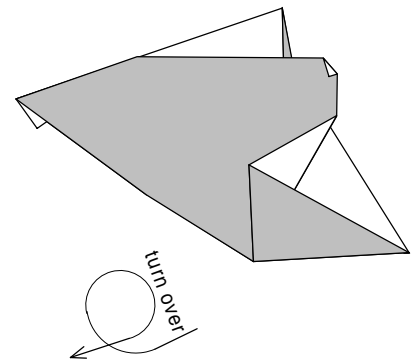
4. Mountain fold the edge while squash pleated edge behind



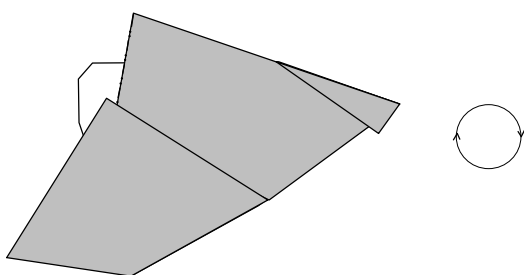
5. Squash



6.



7. Rotate



8. Finished; Shape to your own taste

